

FITTING INSTRUCTIONS

UNIVERSAL WALK-IN size 1450

VIVID

IMPORTANT

Thank-you for choosing a VIVID shower door.

Please familiarise yourself with these instructions before installing.

Do you have all the tools required?

Is the installation site compatible with the size of door supplied?

Are all the enclosure components present?

Is the installation kit complete?

DO NOT attempt to install the product unless you can tick **ALL 4** boxes adjacent as satisfactory.

The wall plugs supplied with the installation kit are for use in solid walls.

Hollow or 'stud-partition' walls will require alternative fixings. Please consult a hardware supplier for the correct type.

It may also be necessary to consult your tiling supplier about the correct method for drilling your tiles.

WARNING

**HEAVY PRODUCT, ASSISTANCE MAY BE REQUIRED
USE SAFETY EYEWEAR WHEN DRILLING**

Any parts missing or damaged must be reported to your supplier within 5 days of purchase. Please state size & colour of product and part number as shown for the corresponding size of door.

INSPECT DOOR & TRAY BEFORE FITTING NO CLAIMS WILL BE ACCEPTED AFTER THE TRAY OR DOOR HAVE BEEN INSTALLED

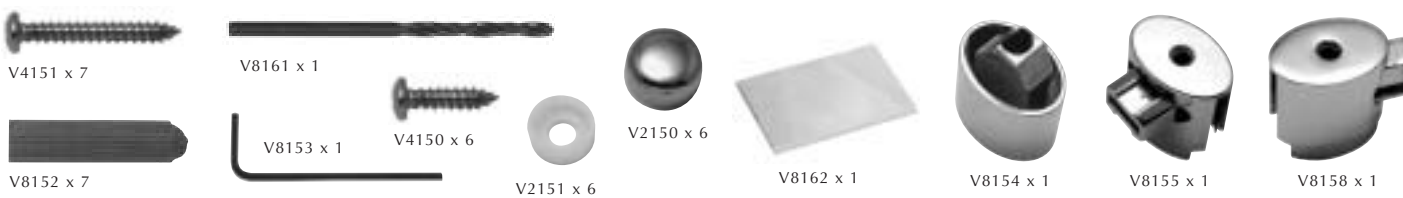
<< MAJOR COMPONENTS >>



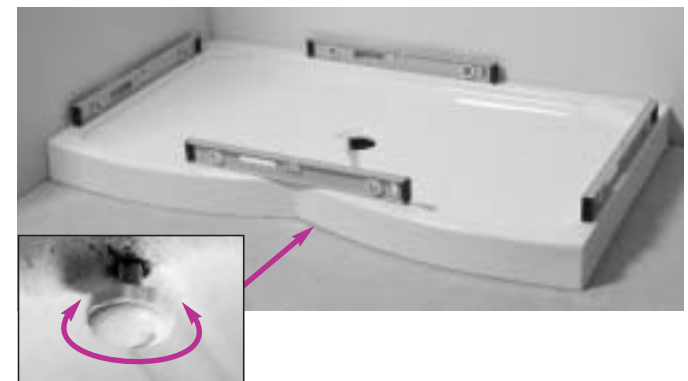
<< TOOLS YOU WILL NEED >>



<< FITTING KIT >>

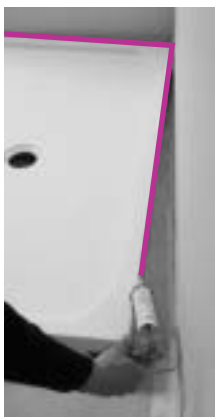


FITTING INSTRUCTIONS - FOLLOW STEPS IN SEQUENCE



1 Ensure area where tray is to be fitted is clear from dirt & debris & loose material. Place tray into position and mark floor for waste position. Position waste trap and outlet pipe. Some floor removal will be necessary to position waste under tray. To assist fitting of waste trap an access hole may be cut in the floor in front of the shower tray.

2 Place tray into position, adjust and level all support feet. **Ensure all support feet are in contact with the floor.**



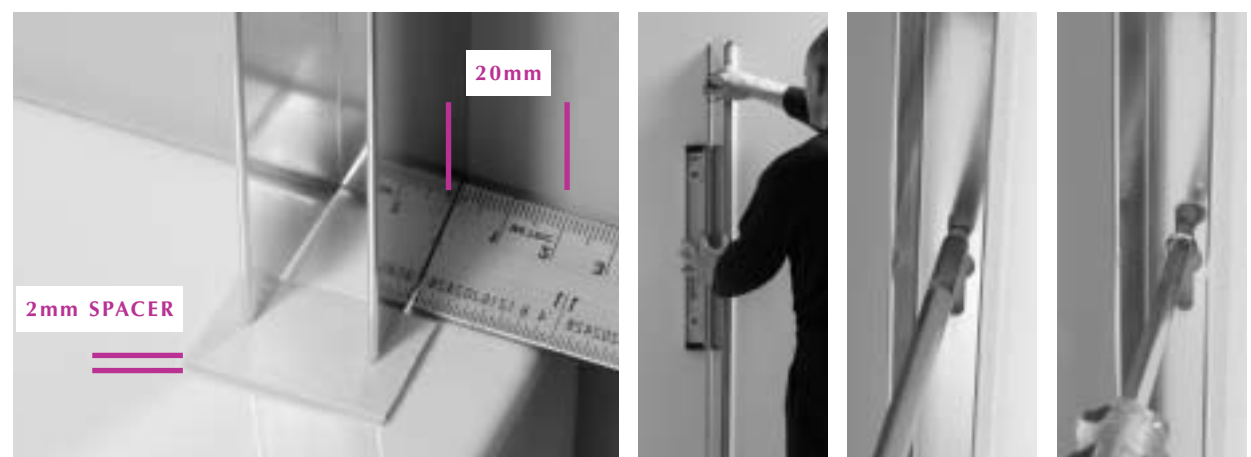
VERY IMPORTANT

DO NOT ANGLE TILES OUT

ASCERTAIN WHICH SIDE THE ENCLOSURE ENTRY WILL BE. PRODUCT IS FACTORY SET FOR RIGHT HAND. IF LEFT HAND IS REQUIRED TOP AND BOTTOM FERRULE CONNECTOR CAPS ON BOTH PANELS MUST BE REMOVED AND REPLACED TO OPPOSITE ENDS OF PANELS.

3 Place a bead of silicone on the back edge of the shower tray and push into position. Seal top of tray to wall. Place a bead of silicon all round the tray hole and screw the cover of the trap to down onto the waste under the tray. Tile area.

WARNING: TILES MUST BE STRAIGHT TO TOP OF TRAY. ENSURE TRAY IS LEVEL.



OPTIONAL FOR LEFT ENTRY Unscrew ferrule connector cap retaining screws from top and bottom of main panel. Remove and then replace them at opposite ends of panel. Repeat for end panel if required.

4 Fit wall profile V1150 for main glass panel 20 mm from edge of shower tray. Place 2mm spacer below wall profile, plumb and mark fixing holes. Drill wall & place wall plugs V8152 in holes and secure with screws V4151 provided. Repeat process for end panel if using one.



5 Place main glass panel **A** into position and drill holes in the upright profile, as shown at 6, into the wall profile and secure with screws V4150, clips V2151, and cover caps V2151.



6 Place end glass panel **B** into position and fix as shown at 5.



7 Place longer support rail V1151 from side panel to main panel into position.



8 Place shorter, main panel support rail V1152 into position, level and mark position for mounting bracket.



Picture shows fixing for installation with main panel and end panel. When installing main panel only turn bracket through 90° to fit rail V1153.



9 Secure rail mounting bracket to wall. Re-fit rail and tighten all retaining grub screws in rails.



10 Alternative fitting in a recess without the end panel. Remove the ferrule connector cap with double spigot and replace with the single spigot version V8158. Swap to opposite ends of panel if required for left entry version.



11 Foot board may be placed in the unit when sealing is complete.



24 HRS



Seal wall profiles to wall on inside vertically. Seal bottom of glass panels to shower tray horizontally on outside only. Seal upright profile to wall from shower tray approx 100mm vertically on outside. Seal all vertical joints on bottom of frame on outside only. Allow unit 24hrs to set.