

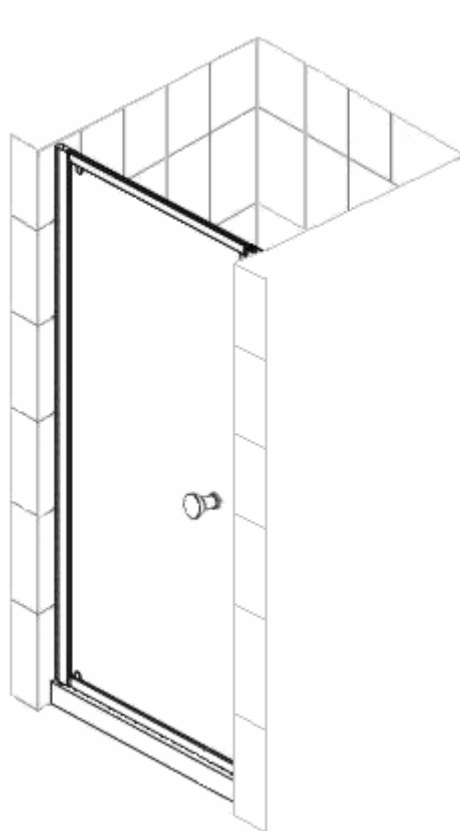
BLACK BOX PIVOT DOOR

Installation Instructions

Inspect Contents

Please read these installation instructions carefully before attempting to install the product. Check all fittings and components. If anything is missing or damaged, report it to your supplier within 5 working days.

NOTE: No claims will be accepted once the product has been installed. Ensure the tray is level and sealed on all sides before proceeding with the fitting of the Door.



Parts and fittings (part codes in bold)

- | | | | |
|--------------------------|---------------|------------------------------|---------------|
| 1. Wall Profile x 2 | BB1201 | 6. Magnetic Seal | BB3206 |
| 2. Screw (4x30mm) x 6 | BB4202 | 7. Upright cushion seal | BB3207 |
| 3. Screw (4x12mm) x 6 | BB4203 | 8. Screw cover caps x 12 | BB2202 |
| 4. Wall Plug x 6 | BB6204 | 9. Screw cover cap clip x 12 | BB2203 |
| 5. Bottom Deflector seal | BB3210 | 10. Handle x 1 | BB6202 |

Tools Required

Power Drill	Pencil
Spirit Level	Tape Measure
Philips #2 Screwdriver	Drill Bits, 3.5mm, 6mm

Installation

1. Plumb the wall profiles **BB1201** using the vertical element of the spirit level. Mark 3 Holes (for each wall profile).
2. Drill holes with 6mm masonry drill bit, and fit wall plugs **BB6204** Fig 1
3. Using the Screw **BB4202**, fix wall profiles **BB1201** to wall.
4. **Door Only** - Slot the door frame into both wall profiles and position centrally between them.

Note: If the door is close to its minimum adjustment put the wall profiles onto the door frame first, then position the door onto the tray and finally fix wall profiles to the wall.

Door & Side Panel – Slot door into wall profile on one side. Then position the side panel with corner post into the other wall profile. Finally slot the corner post onto the Pivot door.

5. Ensure the enclosure is level and sides vertical. Door must be square in wall profiles/corner post to ensure it opens and closes correctly.
6. **IMPORTANT:** Gap between the bottom of the glass panel and the bottom profile must be even along the full length.
7. Using a 3.5mm drill bit, drill through the frame profile into the wall profile **BB1201** and secure with screws **BB4203**, with screw cover cap clips **BB2203** and push on screw cover caps **BB2202**. Fig 2 & 3
8. The magnetic seal **BB3206** (pre-fitted to the glass panel but may need to be re-aligned depending on handing) and upright seal **BB3207** (in separate bag with BB3210) should be flush with the top of the glass panel. Push on bottom seal **BB3210** (with deflector on inside) Fig 4F and upright seal **BB3207** (with cushion towards outside) Fig 4E. Bottom seal fits between the magnetic and upright seal.
9. Fit Handle ensuring washers are used **BB6202**.

Sealing

Use a quality mould resistant silicone

Inside (*dashed line fig 5*)

When installation is complete seal the joint between the wall profile and the wall, top to bottom on the inside only. DO NOT SEAL where the wall profile sits on the tray. DO NOT SEAL any parts of the enclosure that sits on the tray on the inside of the enclosure. Fig 5

Outside (*Black full line fig5*)

From outside the enclosure, seal the joint between the bottom channel and the shower tray as illustrated, and approx 50mm up on the wall profile on either side. Also seal the bottom frame joints on the outside.

Fig 5

IMPORTANT: DO NOT USE FOR 24 HOURS AFTER SEALING.

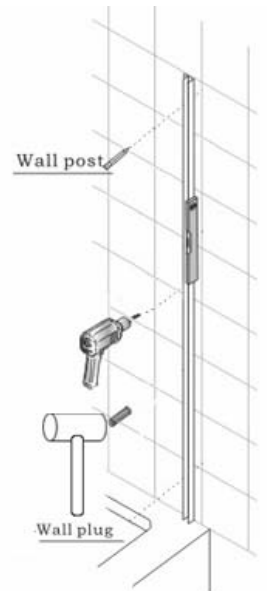


Fig 1

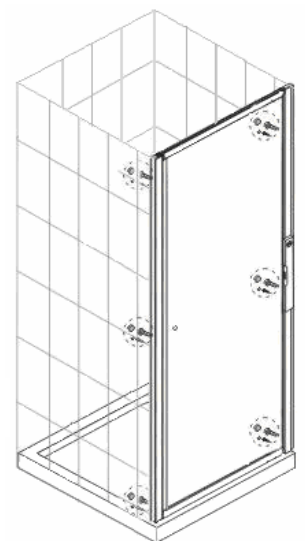


Fig 2

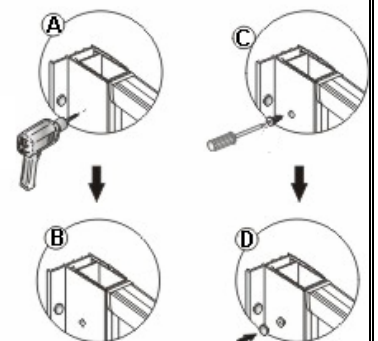


Fig 3

View from inside

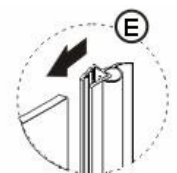


Fig 4

View from outside

Fig 5

