

NOTE: This enclosure may be fitted as a Crescent Wall in a wet room situation or with the optional Merlyn M-tower. Please contact your supplier or Merlyn for fitting instructions or our website at www.merlynbathrooms.com.



COMPLETED INSTALLATION with side panel

IMPORTANT

Thank-you for choosing Merlyn. Please familiarise yourself with the fitting instructions before commencing fitting.

- 1 Check that you have the tools required
- 2 Check the installation site is compatible with size of door supplied
- 3 Check all the enclosure components
- 4 Check the installation kit is complete

Any parts missing or damaged must be reported to your supplier within 5 days of purchase. Inspect tray before fitting no claims will be accepted after tray has been installed.

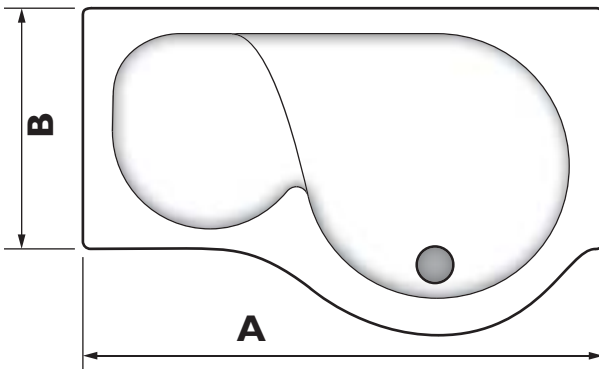
DO NOT attempt to install the product unless you can tick **ALL 4** boxes above as satisfactory.

The wall plugs supplied with the installation kit are for use in solid walls. Hollow or 'stud-partition' walls will require alternative fixings. Please consult a hardware supplier for the correct type. It may also be necessary to consult your tiling supplier about the correct method for drilling your tiles.

USE SAFETY EYEWEAR WHEN DRILLING

WARNING VERY IMPORTANT

When the SHOWER TRAY is fitted & tiled, the finished tile measurement from the front of the tile to the edge of the shower tray must correspond to the measurements below. You must check that the tray has been fitted in accordance with the instructions supplied with it. No claims will be entertained where a shower tray has been incorrectly fitted.



A for 1700

Max finished tile measurement = **1700**mm
Min finished tile measurement = **1685**mm

B for 1700

Max finished tile measurement = **825**mm
Min finished tile measurement = **810**mm

A for 1450

Max finished tile measurement = **1450**mm
Min finished tile measurement = **1435**mm

B for 1450

Max finished tile measurement = **825**mm
Min finished tile measurement = **810**mm

1 Tools required



TIP

A small step-ladder is also useful to facilitate easy installation of this product.

2 Enclosure components



- 1091** x 1 Wall profile
- B** x 1 Walk-in, main panel
- 1096** x 1 Main panel towel rail (1450)
- 1097** x 1 Main panel towel rail (1700)
- 1048** x 1 Side panel towel rail (1450)
- 1098** x 1 Side panel towel rail (1700)
- E** x 1 Walk-in, side panel
- 1091** x 1 Wall profile

ALTERNATIVE M-TOWER COMPONENTS

- G** x 1 Walk-in main panel with integral M-tower chrome facia
- 1114** x 2 Supply hose ferrulle
- 1115** x 1 M-tower base template
- 1116** x 1 M-tower cover cap
- 1129** x 1 M-tower end panel rail (1450)
- 1130** x 1 M-tower end panel rail (1700)

NOTE Side panel rail is supplied in the main panel carton. This is not used when installing without a side panel

Numbers in [brackets] indicate extra parts supplied for fitting when installed with a side panel. All parts are supplied in main panel carton.

3 Installation kit

PLEASE QUOTE PART NUMBERS WHEN ORDERING SPARES

Parts shown actual size



1030 x 1



1028 x 1 [+1]



1008 x 2 [+2]



1006 x 2 [+2]



1007 x 2 [+2]



1001 x 1



1002 x 1



1004 x 3 [+2]



1122 x 2 for use with tower only



1005 x 3 [+2]



1011 x 2 [+2]



1014 x 2 [+2]

1118 x 1 for use with tower only



1013 x 2 [+2]



1012 x 4 [+4]



1057 x 1 for use with side panel only
NOT USED WITH M-TOWER



1056 x 2 [+2] Walk-in & M-Tower



1056 x 1 [+2] Walk-in

4 Installation site

IMPORTANT

THE TRAY MUST BE INSTALLED AND THE WALLS MUST BE TILED BEFORE THE SHOWER ENCLOSURE IS INSTALLED

1 Tiling, or other wall finishing, should be effectively sealed at the tray edges.

NOTE: Do not angle out tiles on surface of tray.

2 Tiles should extend at least to the corners of the tray and a minimum of 2.0 metres above its top surface. The minimum total height required for installation is 2220 mm from the finished floor surface to the top of the enclosure.

IT IS ESSENTIAL THAT THESE CRITERIA ARE MET TO ENSURE SATISFACTORY INSTALLATION OF THE ENCLOSURE.

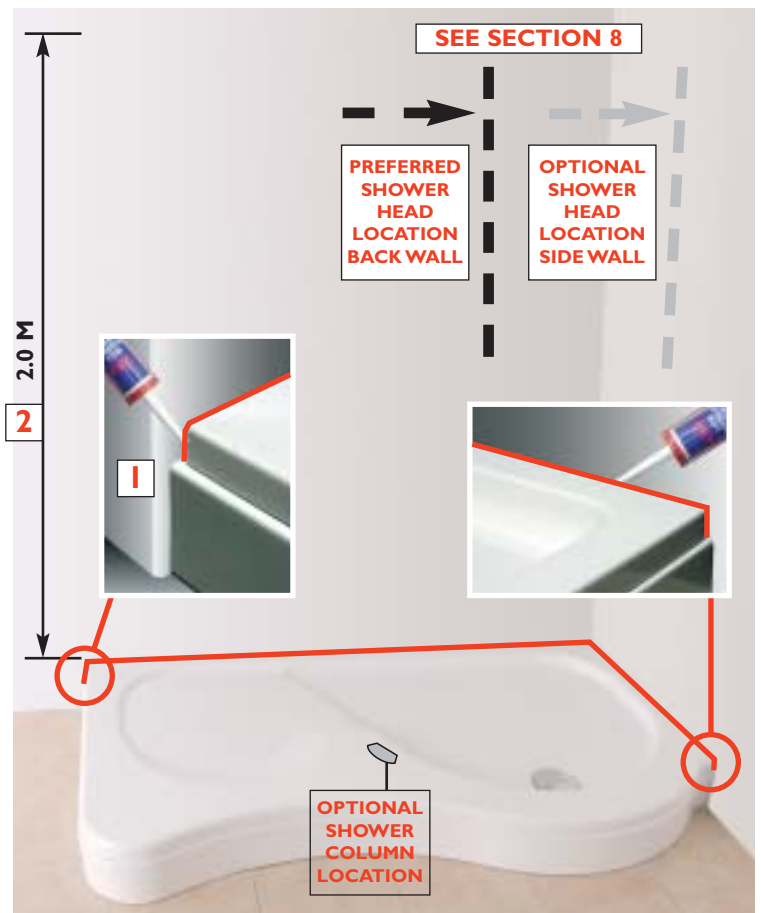
TIP

Keep all the fitting kit component parts in the box supplied to prevent loss. Protect the tray surface against damage.

5 Fit glass panels

TIP Place paper in the tray to prevent damage to the surface while working on the installation.

- 1 Using the vertical element of the spirit level ensure the profile is perpendicular to the tray.
- 2 Mark the hole positions on the wall through the 2 holes in the profile.
- 3 Drill the wall to accept the wall plugs **1004** and place the plugs in the holes.
- 4 Screw the profile(s) **1091** to the wall with the long screws **1005** supplied in the fitting kit. Check vertical alignment and make any minor adjustment via the slotted holes in the profile.



- 5 Working from **inside** the enclosure drill 2 holes through the main panel profile into the wall profile with drill bit **1001**. Approx. 200mm (8") down from the top and up from the bottom.
- 6 Fix the main panel to the wall profile with 2 of the short screws **1008** and cap retainers **1006**
- 7 Snap on cover caps **1007**.
Repeat for the side panel if required.

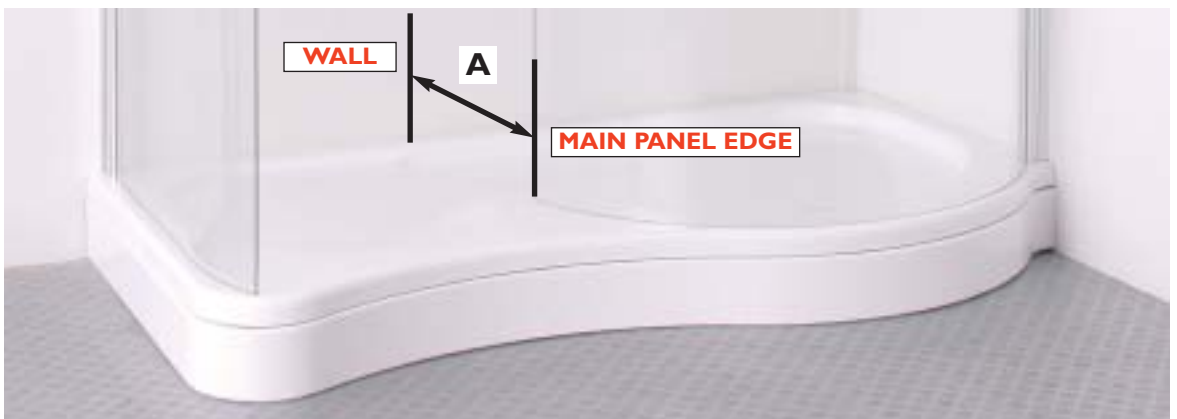
FIT MAIN PANEL



FIT SIDE PANEL



- 8 Entry space into the showering area between the wall and the main panel edge, dimension A below, should be between 470 and 500mm depending on installation conditions.



NOTE INSTALLATION OF THE PRODUCT WITH OR WITHOUT M-TOWER IS THE SAME TO THIS POINT

6 Fit towel rails

1 If fitting a **MAIN PANEL ONLY** assemble the 2 rail brackets **1056** supplied onto the main panel rail **1096/7**.

2 Mount the assembled rail to the main glass panel using the dome cups **1013**, the machine screws **1011** and the plastic washers **1012** (one each side of the glass).

You may require assistance



3 Level the rail and mark the position for the rail support ferrule **1030**, drill the wall and fix the ferrule with a plug **1004** and screw **1005**.

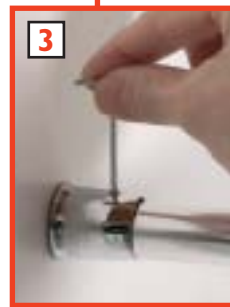
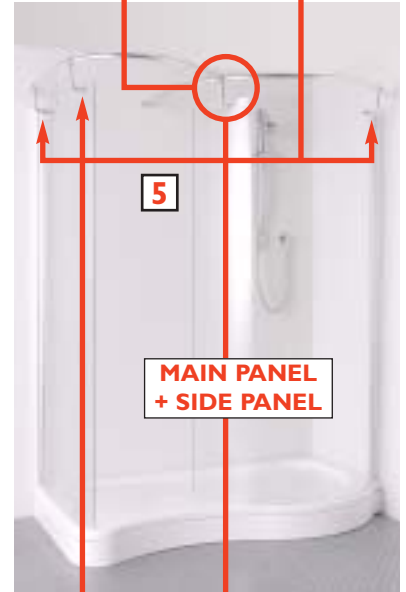
4 If fitting a **MAIN PANEL + SIDE PANEL** replace the standard rail bracket **1056** with the rail bracket **1057**.

5 Assemble the 2 rail brackets **1056** supplied onto the side panel rail **1048/98** or **1129/30** and attach to the side panel with the dome cups **1013**, the machine screws **1011** and the plastic washers **1012** (one each side of the glass).

6 Fit the side panel rail to the spigot on the rail bracket **1057** and tighten the grub screw.

7 Adjust the rails as required and tighten all the grub screws with the hexkey **1002**.

8 Fit the towel rail end stops **1028** into the open ends of each rail and the cover caps **1014** into the dome cups.



TIP If caps are loose, use a drop of silicon to set them in place.



FITTING OF ALTERNATIVE M-TOWER MAIN PANEL

7 M-tower panel



1 When fitting the alternative **M-TOWER MAIN PANEL** assemble as the standard main panel with 2 of the rail brackets **1056**. The rail joint **1118** must be used between the the 2 rail brackets on the main panel towel rail to secure the side panel towel rail.

2 Position the M-tower template **1115** on the inside of the main panel integral facia. Seal in place with silicon.

3 Use a $\text{Ø}42\text{mm}$ hole saw to drill through both positions.

4 Insert the supply hose ferrules **1114** from the top and tighten the nuts onto them from the under side of the tray. Seal in place with silicon.

Follow the instructions supplied with the Merlyn M-tower to complete it's installation.



Merlyn Walk-in shower enclosures are designed to contain water in the 'wet' area showering space.

- 1 The ideal positioning of spray-heads and body jets is shown in figure 1 with the optional Merlyn M-tower.
- 2 The preferred position for wall mounted spray-heads and body jets is shown in figure 2.

3 A second, optional, position is shown in figure 3.

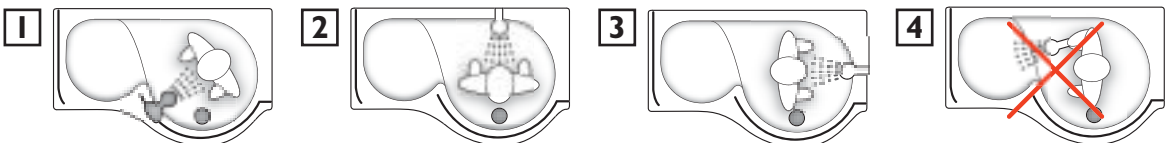
TIP If mounting in this position be sure to turn all body jets off before entering or exiting the shower space.

4 Spray-heads and body jets should not be directed at the side panel (or end wall in the recess installation). This could result in water splashing out of the

8 Shower head position

enclosure into the entry space.

The maximum recommended flow rate for the shower tray waste is 28 litres per minute at 15mm pooled.



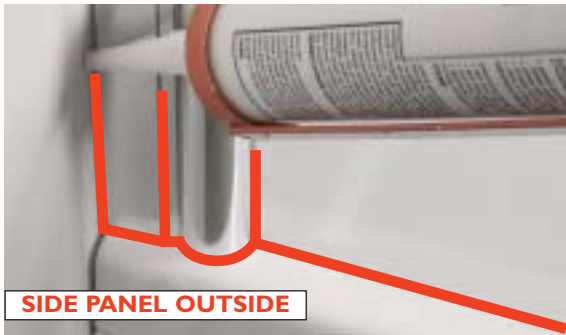
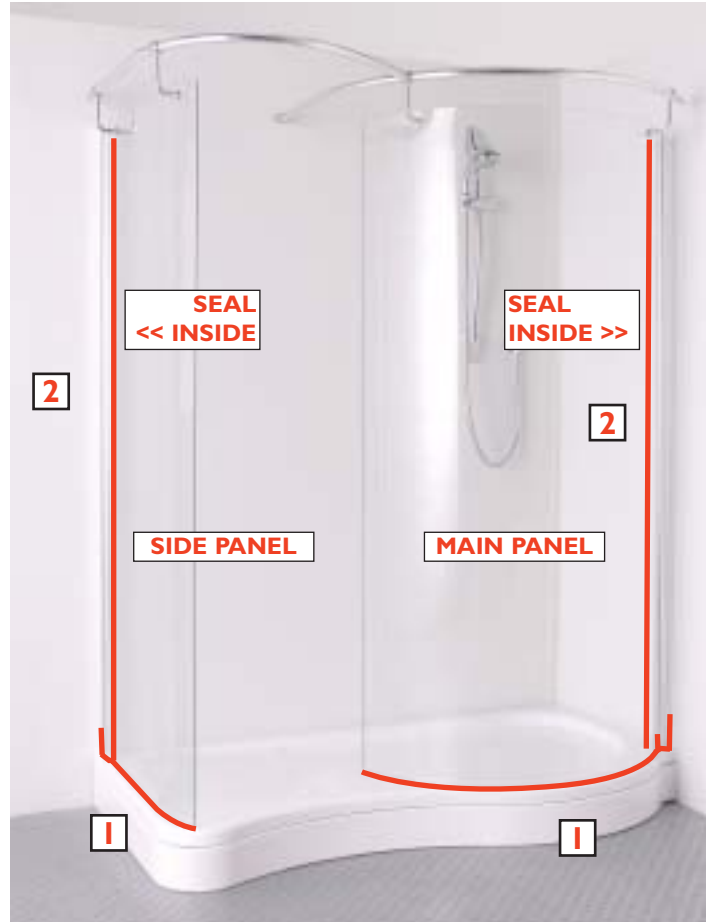
CHECK TRAY FEET ARE ALL STILL IN FIRM CONTACT WITH THE FLOOR



9 Seal enclosure

- 1 Seal along the bottom edge of the main and side panels **ON THE OUTSIDE ONLY.**
- 2 Seal top to bottom **ON THE INSIDE ONLY** between the wall profiles and the wall on the main and side panels.
- 3 **DO NOT USE THE ENCLOSURE FOR 24 HOURS AFTER SEALING**

24 HRS



SIDE PANEL OUTSIDE



MAIN PANEL OUTSIDE

IMPORTANT

DO NOT SEAL BETWEEN THE ENCLOSURE AND THE TRAY ON THE INSIDE

SERIES 7 WALK-IN ENCLOSURE

WE ARE SURE YOU WILL BE PLEASED WITH YOUR NEW MERLYN SHOWER ENCLOSURE.

Where a shower enclosure has been installed contrary to these instructions, Merlyn cannot accept responsibility for any loss or damage, however caused, and any on-site service may incur a charge.

www.merlynbathrooms.com 00 353 56 7724770