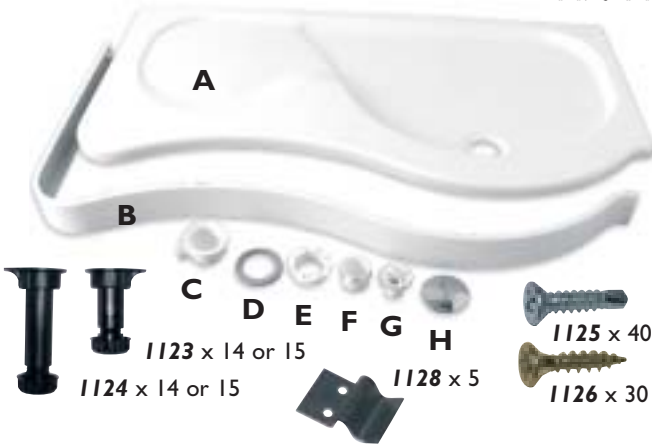


INSTALLATION GUIDE



- A x 1 Shower tray
- B x 1 Access panel
- C x 1 Waste trap bowl
- D x 1 Rubber ring seal
- E x 1 Waste trap inner
- F x 1 Debris trap outer
- G x 1 Debris trap inner
- H x 1 Waste trap cover

IMPORTANT

Please take time to read through this guide before starting to install the product.

- 1 Check that you have the tools required
- 2 Check the installation site is compatible with size of door supplied
- 3 Check all the enclosure components
- 4 Check the installation kit is complete

Any parts missing or damaged must be reported to your supplier within 5 days of purchase. Inspect tray before fitting no claims will be accepted after tray has been installed.

1 Tools required

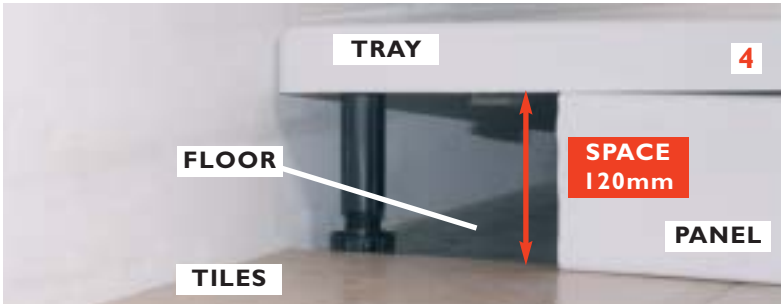


Quality silicon sealant & applicator



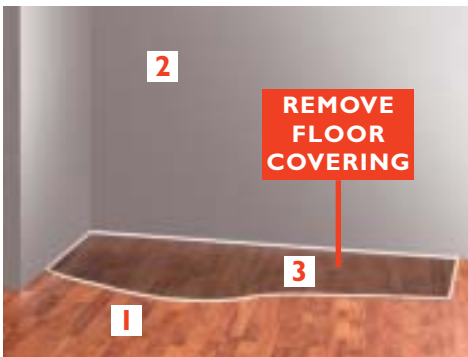
Pencil/marker

Spirit-level with horizontal & vertical level indicators



2 Site preparation

- 1 The floor **must be** of solid construction, in good condition and free from any loose or uneven surface material.
- 2 The walls **must not** be tiled. This type of tray is designed to be installed **before** tiling.
- 3 **REMOVE** any loose floor finish from under the immediate area that the shower tray will occupy, e.g., carpet, lino, wood panelling, etc.
- 4 Leave sufficient **SPACE** for fitting access panel **B** above finished floor by adjusting the legs.

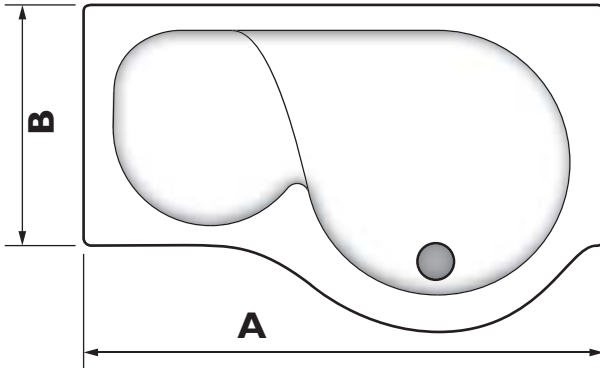


VERY IMPORTANT

- 5 **Wall tiling must be flat to top surface of tray, DO NOT** angle out the bottom row of tiles.

WARNING VERY IMPORTANT

When the SHOWER TRAY is fitted & tiled, the finished tile measurement from the front of the tile to the edge of the shower tray must correspond to the measurements below. You must check that the tray has been fitted in accordance with the instructions supplied with it. No claims will be entertained where a shower tray has been incorrectly fitted.



A for 1700

Max finished tile measurement = 1700mm
Min finished tile measurement = 1685mm

B for 1700

Max finished tile measurement = 825mm
Min finished tile measurement = 810mm

A for 1450

Max finished tile measurement = 1450mm
Min finished tile measurement = 1435mm

B for 1450

Max finished tile measurement = 825mm
Min finished tile measurement = 810mm

3 Shower head position

Merlyn Walk-in shower enclosures are designed to contain water in the 'wet' area showering space.

1 The ideal positioning of spray-heads and body jets is shown in figure 1 with the optional Merlyn M-tower.

2 The preferred position for wall mounted spray-heads and body jets is shown in figure 2.

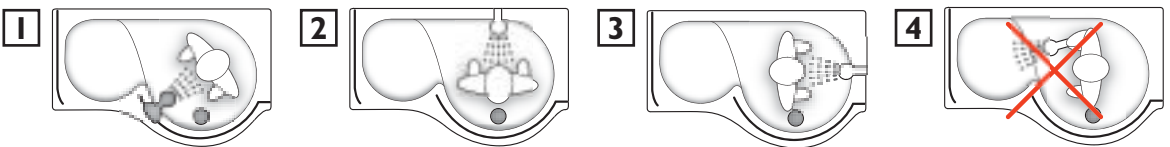
3 A second, optional, position is shown in figure 3.

TIP If mounting in this position be sure to turn all body jets off before entering or exiting the shower space.

4 Spray-heads and body jets should

not be directed at the side panel (or end wall in the recess installation). This could result in water splashing out of the enclosure into the entry space.

The maximum recommended flow rate for the shower tray waste is 28 litres per minute at 15mm pooled.



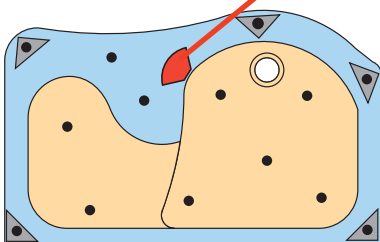
4 Tray support positions

1 Attach the adjustable support legs in the positions shown below.

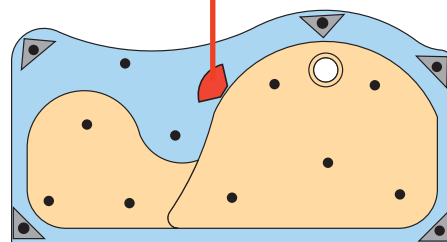
DO NOT PLACE SUPPORT LEGS IN M-TOWER POSITION

Short legs in the orange areas

Long legs in the blue areas



1450 LH TRAY WITH 14 SUPPORT LEGS



1700 LH TRAY WITH 15 SUPPORT LEGS





USE THREAD CUTTING SCREWS IN GRP AREAS



USE WOOD SCREWS IN WOOD AREAS

4 Tray support positions

- 1 Turn the tray over onto a flat surface that is covered to prevent the tray from getting scratched.
- 2 Use the thread cutting screws to attach legs to the GRP areas.
- 3 Use the wood screws to attach legs to the wood pieces.
- 4 Attach the access panel clips **1128** to the wood blocks with wood screws **1126**.



THE SUPPLY PIPES FOR THE M-TOWER MAY BE FITTED NOW BELOW THE TRAY

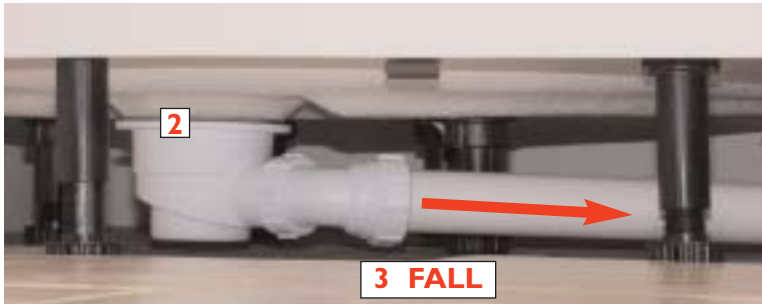
5 Install plumbing

- 1 Install the waste trap bowl **C** using Rubber ring seal **D** under the tray, insert waste trap inner **E** and tighten.
Position the tray against the walls.
- 2 Install the waste trap to waste plumbing under the tray.
- 3 **It is essential to have a fall in the waste system for water to flow away effectively.**

IMPORTANT

Do not place pipework in a position that will interfere with the adjustment of the tray support legs.

The maximum recommended flow rate for the shower tray waste is 30 litres per minute at 15mm pooled.



6 Level tray

- 1 Push the tray in against the walls and level by adjusting the feet

IMPORTANT

ALL FEET MUST BE IN FIRM CONTACT WITH THE FLOOR



TIP Small blocks of wood may be used to aid levelling

- 1 If fitting without side panel in a recess the access panel will require cutting to size. Cut slightly beyond the corner radius of the panel to achieve a good fit as shown in at 2.



7 Seal tray

- 1 Move the tray slightly away from the walls to apply a large bead of silicon sealant just below the top edge of the tray skirt at each wall.
- 2 Fit the inner parts of the waste trap **F, G & H**, onto the trap inner **E**.
- 3 Push the tray firmly against the walls and apply a further bead of silicon sealant along the entire length of the joint between tray and walls, including the vertical joint. Ensure the tray is firmly fixed and that there is **no movement**.
- 4 Push the access panel **B** into place.



IMPORTANT

Leave the tray to set for **24 hours** before tiling the walls.

THE WALLS MUST BE TILED BEFORE THE SHOWER ENCLOSURE IS INSTALLED

CHECK TRAY FEET ARE ALL STILL IN FIRM CONTACT WITH THE FLOOR BEFORE TILING WALLS

SERIES 7 WALK-IN TRAY

WE ARE SURE YOU WILL BE PLEASED WITH YOUR NEW MERLYN SHOWER TRAY.

Where a shower tray has been installed contrary to these instructions, Merlyn cannot accept responsibility for any loss or damage, however caused, and any on-site service may incur a charge.

www.merlynbathrooms.com 00 353 56 7724770