

# QUADRANT



SERIES

7

SHOWER ENCLOSURES

## INSTALLATION GUIDE

### IMPORTANT

**Thank-you for choosing Merlyn.**

**Please familiarise yourself with the fitting instructions before commencing fitting.**

- 1 Check that you have the tools required
- 2 Check the installation site is compatible with size of enclosure supplied
- 3 Check all the enclosure components
- 4 Check the installation kit is complete

Any parts missing or damaged must be reported to your supplier within 5 days of purchase.

**DO NOT** attempt to install the product unless

you can tick **ALL 4** boxes above as satisfactory.

The wall plugs supplied with the installation kit

are for use in solid walls. Hollow or 'stud-partition' walls will require alternative fixings.

Please consult a hardware supplier for the

correct type. It may also be necessary to consult your tiling supplier about the correct method for drilling your tiles.

<<< COMPLETED INSTALLATION



**TIP** The door in this product opens outwards and some water may drip onto the floor.

It is therefore recommended for your safety to place a non-slip mat at the entry to step out onto.

## 1 Tools required



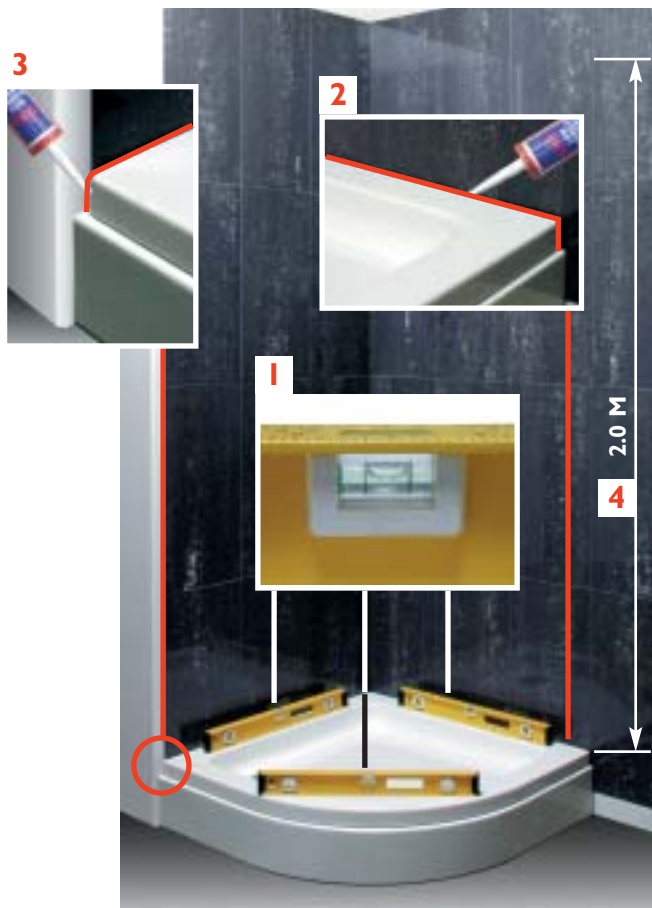
### TIP

A small step-ladder is useful to facilitate easy installation of this product.

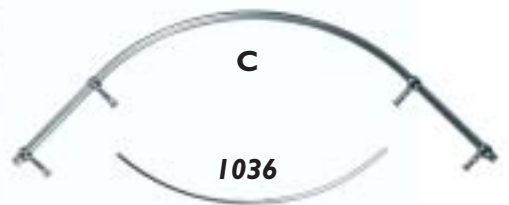
## 2 Installation site

- 1 Ensure that the top surface of the shower tray, on which the enclosure will be installed, is level in every direction.
- 2 The tiling, or other wall finishing, should be effectively sealed at the tray edges.
- 3 Tiles should extend at least to the corners of the tray and a minimum of 2.0 metres above its top surface.
- 4 The minimum height required for installation is 2.0 metres from the top of the tray.

IT IS ESSENTIAL THAT THESE CRITERIA ARE MET TO ENSURE SATISFACTORY INSTALLATION OF THE ENCLOSURE.



## 3 Enclosure components



- A** x 2 Wall profile
- B** x 2 Curved glass, hinged door & panel
- C** x 1 High-level towel rail

## 4 Installation kit

Kit parts shown actual size code letters identified in text

**PLEASE QUOTE PART NUMBERS WHEN ORDERING SPARES**



**1017** x 2



**1018** x 4



**1016** x 4



**1008** x 4



**1006** x 4



**1007** x 4



**1025** x 2



**1002** x 1



**1024** x 2



**1014** x 20



**1004** x 4



**1013** x 4



**1001**  
x 1



**1005**  
x 4



**1012** x 8



**1003** x 2



**1011** x 4

## 5 Wall profiles

- 1 Place one wall **A** profile against a wall, **25mm** in from the edge of the tray. The flange on the profile should be toward the inside of the enclosure.
- 2 Using the vertical element of the spirit level ensure the profile is perpendicular to the tray.
- 3 Mark the hole positions on the wall through the 2 holes in the profile.
- 4 Drill the wall to accept the wall plugs **1004**.
- 5 Place the plugs **1004** in the holes.
- 6 Screw the profile **A** to the wall with the long screws **1005** supplied in the fitting kit. Check vertical alignment and make any minor adjustment via the slotted holes in the profile. Repeat for 2nd profile.

**TIP** Place paper in the tray to prevent damage to the surface while working on the installation.



## 6 Door spacers

- 1 Position a spacer **1003** into the water seal channel at the open end on the bottom of each door.



- 2 Note how the spacer is correctly positioned.

**TIP** Lean the door and panel against a wall or have an assistant hold them while you do this.



## 7 Fit doors



- 1 Lift a door and panel unit **B** onto the tray.
- 2 Push the door and panel **B** onto the wall profile **A**.  
Repeat this process for the second door and panel.
- 3 The spacers **1003** hold the doors at the correct height from the tray without collapsing the water seal.

**DO NOT REMOVE THE SPACERS**



## 8 Adjust closure



- 1 Align the magnetic door closures and ensure they meet all the way from top to bottom.
- 2 This is achieved by adjusting the door and panel units in or out as required on the wall profiles.

**DO NOT ATTEMPT TO OPEN THE DOORS AT THIS STAGE AS THE PANELS COULD FALL CAUSING SERIOUS DAMAGE**

## 9 Fit rail

1 Stand on a small step-ladder and fit the top rail **C** using; a dome-cup **1013**, countersunk screw **1011** and 2 small plastic washers **1012** at each bracket. One washer each side of the glass.

**TIP** Rest one end of the rail on the top edge of the glass panel.

2 Fix the bracket at position **A** but do not tighten. Next fix brackets **B** & **C** then **D**. Check the magnetic closure is still aligned correctly and tighten all screws.

**TIP** Rail and brackets are factory assembled and should align with the holes in the glass. If they do not, use the Hexkey supplied to loosen the grub screw in the bracket and make the necessary adjustment.



## 10 Fit door handles

1 Open each door **carefully** and fit the door handles **1016** with the spigot **1017**. 1 large plastic washer **1018** on each side of the glass.

**DO NOT REMOVE THE SPACERS FROM THE BOTTOM OF THE DOORS AT THIS STAGE**



## 11 Fix profiles

Work from inside the enclosure with the doors closed and the spacers fitted.

Make sure the magnetic closures are still correctly aligned.

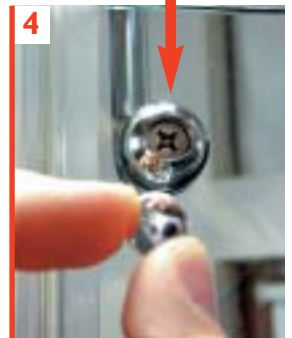
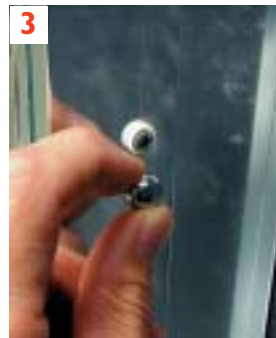
- 1 Drill through both profiles, with the drill bit **1001** supplied, in 4 places approx. 30cm (12") down from the top and up from the bottom.
- 2 Screw the profiles together using the short screws **1008** and cover-cap retainers **1006**.
- 3 Apply the screw cover-caps **1007**.
- 4 Insert the cover-caps **1014** into the recesses in the bracket dome-cups and the hinge back-plates.
- 5 Press in the cover-caps **1024** & **1025** on the tops of the wall profiles. **The door spacers can now be removed.**

### NOTE LOCATION OF FOOTPLATES

LEFT-HAND & RIGHT-HAND COMPONENT 'LOCATOR PIP' TO OUTSIDE



**TIP** If caps are loose, use a drop of silicon to set them in place.



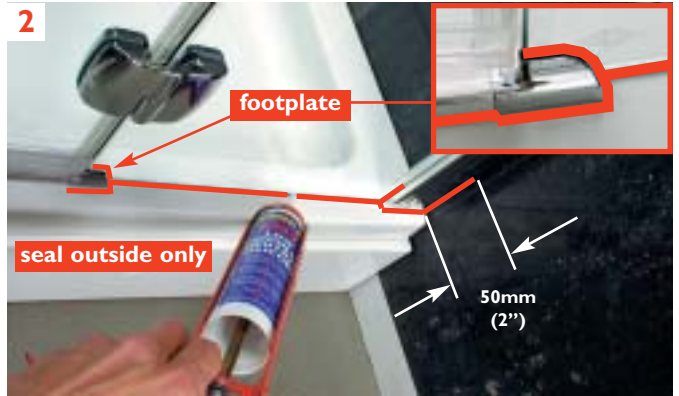
## 12 Seal enclosure

Use a quality silicon sealant and applicator gun to seal the finished enclosure.

- 1 Top to bottom on the **INSIDE** between the wall profile and the wall.



- 2 Along the bottom of the glass panel on the **OUTSIDE** between it and the tray and approx. 50mm (2") up between the wall profiles and the wall and all around the footplates.



PANELS MUST BE **PARALLEL** TO TRAY EDGES



LUNA TRIM MUST BE **OUTSIDE** DOOR BOTTOM SEAL

**24 HRS**

**IMPORTANT**  
DO NOT SEAL  
BETWEEN THE  
PANELS AND THE  
TRAY ON THE  
INSIDE OF THE  
ENCLOSURE



SERIES



SHOWER  
ENCLOSURES

### SERIES 7 QUADRANT ENCLOSURE

WE ARE SURE YOU WILL BE PLEASED WITH YOUR NEW MERLYN SHOWER ENCLOSURE.  
IF YOU HAVE ANY TECHNICAL ENQUIRIES PLEASE CALL OUR SERVICE DEPARTMENT AT 00 353 56 7724770  
**Where a shower enclosure has been installed contrary to these instructions, Merlyn cannot accept responsibility for any loss or damage, however caused, and any on-site service may incur a charge.**

[www.merlynbathrooms.com](http://www.merlynbathrooms.com)