

HINGE DOOR & INLINE PANEL

MERLYN
M

SERIES
7
SHOWER
ENCLOSURES

INSTALLATION GUIDE

IMPORTANT

Thank-you for choosing Merlyn.
Please familiarise yourself with the fitting instructions before commencing fitting.

- 1 Check that you have the tools required
- 2 Check the installation site is compatible with size of door supplied
- 3 Check all the enclosure components
- 4 Check the installation kit is complete

Any parts missing or damaged must be reported to your supplier within 5 days of purchase.

DO NOT attempt to install the product unless you can tick **ALL 4** boxes above as satisfactory. The wall plugs supplied with the installation kit are for use in solid walls. Hollow or 'stud-partition' walls will require alternative fixings. Please consult a hardware supplier for the correct type. It may also be necessary to consult your tiling supplier about the correct method for drilling your tiles.

<<< COMPLETED INSTALLATION



TIP The door in this product opens outwards and some water may drip onto the floor. It is therefore recommended for your safety to place a non-slip mat at the entry to step out onto.

1 Tools required

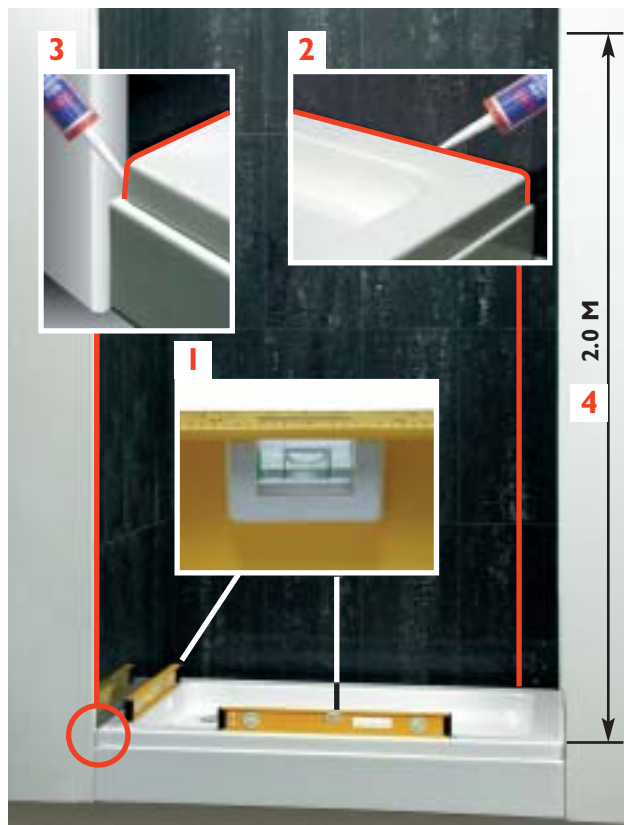


TIP
A small step-ladder is also required to facilitate easy installation of this product.

2 Installation site

- 1 Ensure that the top surface of the shower tray, on which the enclosure will be installed, is level in every direction.
- 2 The tiling, or other wall finishing, should be effectively sealed at the tray edges.
- 3 Tiles should extend at least to the corners of the tray and a minimum of 2.0 metres above its top surface.
- 4 The minimum ceiling height required for installation is 2.0 metres from the top of the tray.

IT IS ESSENTIAL THAT THESE CRITERIA ARE MET TO ENSURE SATISFACTORY INSTALLATION OF THE ENCLOSURE.



3 Enclosure components

- A x 2 Wall profile
- B x 1 Door post
- C x 1 Hinged door
- D x 1 Inline panel
- E x 1 High-level towel rail



1022 x 2 [right & left]



4 Installation kit

Kit parts shown actual size code numbers identified in text

PLEASE QUOTE PART NUMBERS WHEN ORDERING SPARES

PART NUMBER 1030 IS NOT REQUIRED WHEN FITTING WITH OPTIONAL SIDE PANEL

ITEMS BELOW ARE IN THE
RAIL FIXING KIT

When fitting with optional side
panel a separate fitting kit is
supplied with the side panel



1017 x 1



1018 x 2



1016 x 2

1030 x 1



1025 x 2



1007 x 4



1006 x 4

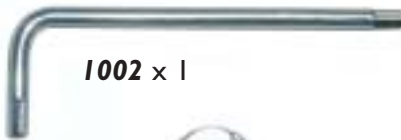


1008 x 5

1014 x 2



1002 x 1



1014 x 8



1013 x 2



1001 x 1



1004 x 5



1005 x 5



1012 x 4



1011 x 2



1003 x 2



5 Wall profiles

- 1 Place one wall profile **A** against a wall, **25mm** in from the edge of the tray.
- 2 Using the vertical element of the spirit level ensure the profile is perpendicular to the tray.
- 3 Mark the hole positions on the wall through the 2 holes in the profile.
- 4 Drill the wall to accept the wall plugs **1004**.
- 5 Place the plugs in the holes.
- 6 Screw the profile to the wall with the long screws **1005** supplied. Check vertical alignment and make any minor adjustment via the slotted holes in the profile. Repeat for 2nd profile.

TIP Place paper in the tray to prevent damage to the surface while working on the installation.



6 Door spacers

- 1 Position the spacers **1003** into the water seal channel one at each end of the door.
- 2 Note how the spacer is correctly positioned.

TIP Lean the door against a wall or have an assistant hold it while you do this.



THE PANEL IS DESIGNED TO SWING OUT ONLY

- 3** Turn in the grub screw on the top hinge part to prevent the moving panel from lifting off the fixed panel. **DO NOT OVERTIGHTEN**



7 Fit panel

- 1** Lift the panel **D** onto the tray (1200 only), or the assembled door and panel unit **C + D** in the case of 800, 900 and 1000 sizes.
- 2** Push the panel onto the wall profile.



8 Fit door

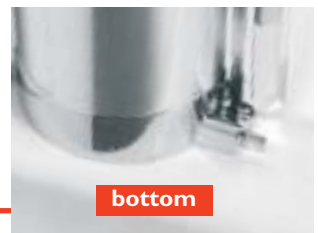
- 1** Lift the hinged panel and locate onto the fixed panel hinges (1200).
- 2** The spacers hold the door at the correct height from the tray without collapsing the water seal.

DO NOT REMOVE THE SPACERS

9 Fit door post

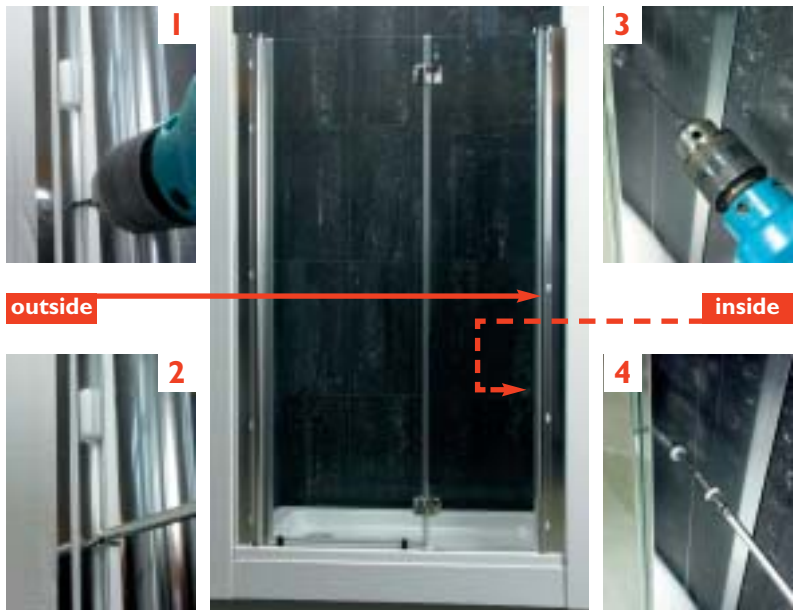
- 1** Fit the door post **B** onto the wall profile. Ensure the small moulded projection is at the bottom.
- 2** Align the magnetic door closer and ensure it connects all the way from top to bottom. This is achieved by adjusting the door - panel unit and/or the door post in or out as required on the wall profiles. (see 8.2 above)

DO NOT OPEN THE DOOR AS THE ASSEMBLY COULD FALL CAUSING SERIOUS DAMAGE



10 Fix panel profile

- 1 Drill through the 2 holes in the open channel, on the **outside** of the panel profile **D** into the wall profile with drill bit supplied **1001**.
- 2 Fix the panel to the wall profile with 2 of the short screws **1008**.
- 3 **Carefully** open the door and from inside the enclosure drill through the 2 holes on the **inside** of the panel profile into the wall profile.
- 4 Fix the panel to the wall profile with 2 of the short screws **1008** and cap retainers **1006**.



11 Fit rail

- 1 Fit the rail support ferrule **1030** onto the open end of the rail **E**.
- 2 Stand on a small step-ladder and fix the top rail **E** using; a dome-cup **1013**, countersunk screw **1011** and 2 small plastic washers **1012** at each bracket. One washer each side of the glass.
- 3 Fix the bracket at position **A** but do not tighten, fix bracket **B** then check the magnetic closure is still aligned correctly and tighten both screws.
- 4 Mark around the ferrule **1030** on the wall.
- 5 Remove the rail assembly.
- 6 Replace the ferrule **1030** against the mark on the wall and mark through the centre hole.
- 7 Drill the wall and fit plug **1004**.
- 8 Fix the ferrule **1030** to the wall with the screw **1005**. Refit the rail assembly.
- 9 Tighten using Hexkey **1002**.

TIP Use the Hexkey **1002** to adjust the grub screw in the bracket if required.



THE RAIL IS SUPPLIED TO FIT THE 1200 DOOR SIZE AND MAY REQUIRE CUTTING TO FIT. SEE THE CUTTING TEMPLATE GUIDE SUPPLIED WITH THE RAIL.



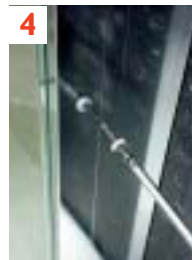
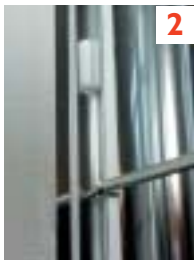
12 Fit 'luna' profile

- 1 Apply a small bead of silicon to the back of the 'luna' profile **1036**.
- 2 Adhere it to the tray pushing it onto the projection on the footplate.
- 3 Slightly lift the other end of the 'luna' profile and 'snap' onto the matching projection on the door receiver post.
Clean away surplus sealant.
- 4 The plastic water seal at the bottom of the door should rest completely **inside** the 'luna' profile.
- 5 Fit the 2 cover caps **1025** into the tops of the door and post wall profiles
- 6 Fit the door hinge cover cap **1023** to the top of the door and **1022** to the top of the receiver post.



outside

inside



13 Fix door post

Close the door and from outside the enclosure check the alignment of the magnetic closer.

- 1 Drill through the 2 holes in the open channel, on the **outside** of the door post **B** into the wall profile with drill bit supplied **1001**.
- 2 Fix the door post to the wall profile with 2 of the short screws **1008**.
- 3 Open the door and from inside the enclosure drill through the 2 holes on the **inside** of the door post profile into the wall profile.
- 4 Fix the door post to the wall profile with 2 of the short screws **1008** and cap retainers **1006**.
- 5 Apply the screw cover-caps **1007**.
- 6 Insert the cover-caps **1014** into the recesses in the bracket dome-cups and the hinge back-plates.
The door spacers can now be removed.



TIP If caps are loose, use a drop of silicon to set them in place.

14 Fit handles & trims

- 1 Open the door and fit the door handles **1016** with the spigot **1017**. One large plastic washer **1018** on each side of the glass.
- 2 Press the 2 trim strips **1037** into the white plastic mouldings in the open channels in the outside of the panel profile and the door post.



15 Seal enclosure

Use a quality silicon sealant to seal the finished enclosure.

- 1 Around the bottom of the door post and approx. 50mm (2") up between the wall profile and the wall.
- 2 Top to bottom on the **INSIDE** between the wall profile and the wall.
- 3 Along the bottom of the glass panel on the **OUTSIDE** between it and the tray and approx. 50mm (2") up between the wall profile and the wall.

24 HRS



IMPORTANT

DO NOT SEAL THE BOTTOM OF THE PANEL ON THE INSIDE OF THE ENCLOSURE

SERIES 7 HINGE DOOR & INLINE PANEL

WE ARE SURE YOU WILL BE PLEASED WITH YOUR NEW MERLYN SHOWER DOOR. IF YOU HAVE ANY TECHNICAL ENQUIRIES PLEASE CALL OUR SERVICE DEPARTMENT AT 00 353 56 7724770

Where a shower enclosure has been installed contrary to these instructions, Merlyn cannot accept responsibility for any loss or damage, however caused, and any on-site service may incur a charge.

www.merlynbathrooms.com

MERLYN
M

SERIES

7

SHOWER
ENCLOSURES