

QUADRANT



SERIES

5

SHOWER ENCLOSURES

INSTALLATION GUIDE



IMPORTANT

**Thank-you for choosing Merlyn.
Please familiarise yourself with the fitting instructions before commencing fitting.**

- 1 Check that you have the tools required
- 2 Check the installation site is compatible with size of enclosure supplied
- 3 Check all the enclosure components
- 4 Check the installation kit is complete

Any parts missing or damaged must be reported to your supplier within 5 days of purchase.

DO NOT attempt to install the product unless you can tick **ALL 4** boxes above as satisfactory. The wall plugs supplied with the installation kit are for use in solid walls. Hollow or 'stud-partition' walls will require alternative fixings. Please consult a hardware supplier for the correct type. It may also be necessary to consult your tiling supplier about the correct method for drilling your tiles.

<<< COMPLETED INSTALLATION

1 Tools required



Power drill

6mm masonry drill bit

Tape measure

Pencil

#2 Pozidrive screwdriver

Eye protection

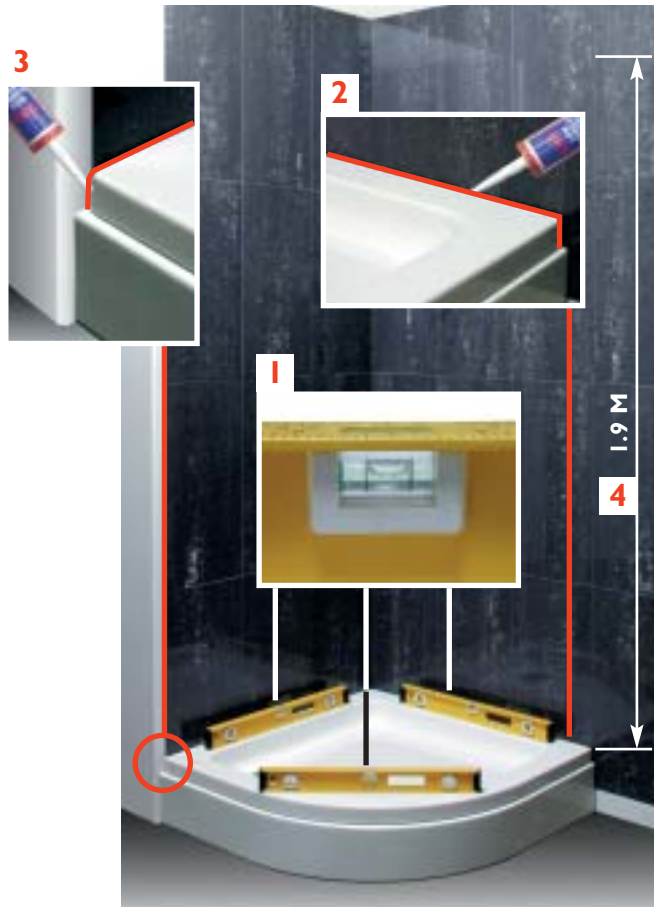
Quality silicon sealant & applicator

Spirit-level with horizontal & vertical level indicators

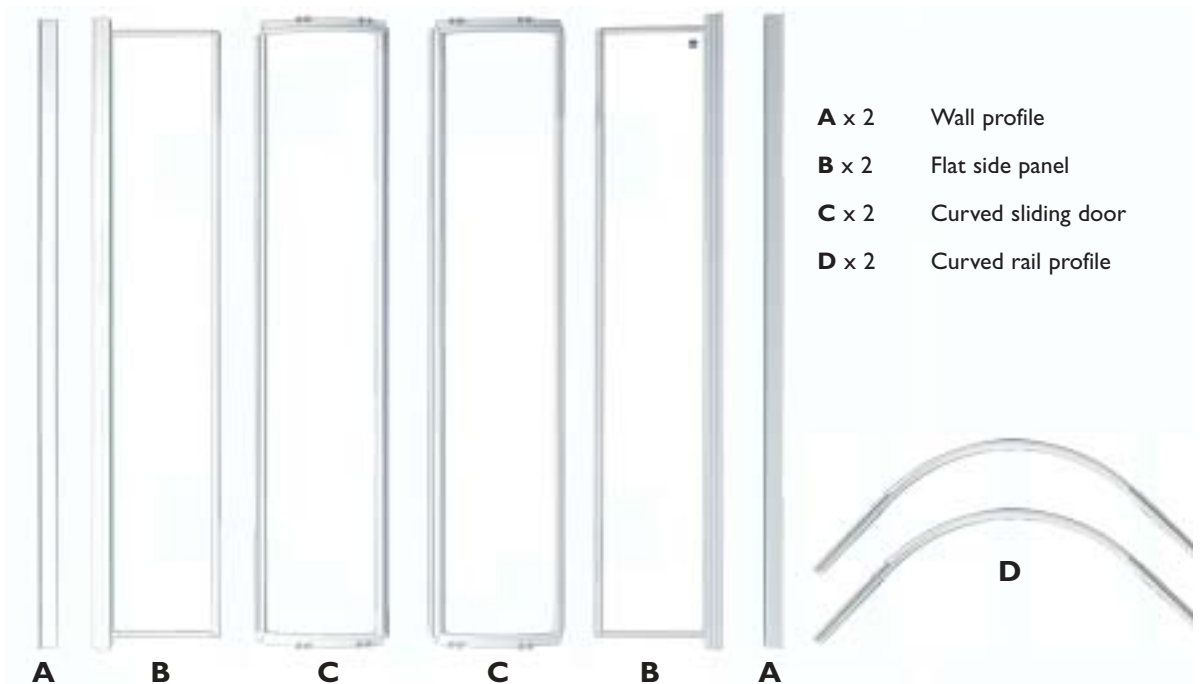
2 Installation site

- 1 Ensure that the top surface of the shower tray, on which the enclosure will be installed, is level in every direction.
- 2 The tiling, or other wall finishing, should be effectively sealed at the tray edges.
- 3 Tiles should extend at least to the corners of the tray and a minimum of 1.9 metres above its top surface.
- 4 The minimum height required for installation is 1.9 metres from the top of the tray.

IT IS ESSENTIAL THAT THESE CRITERIA ARE MET TO ENSURE SATISFACTORY INSTALLATION OF THE ENCLOSURE.



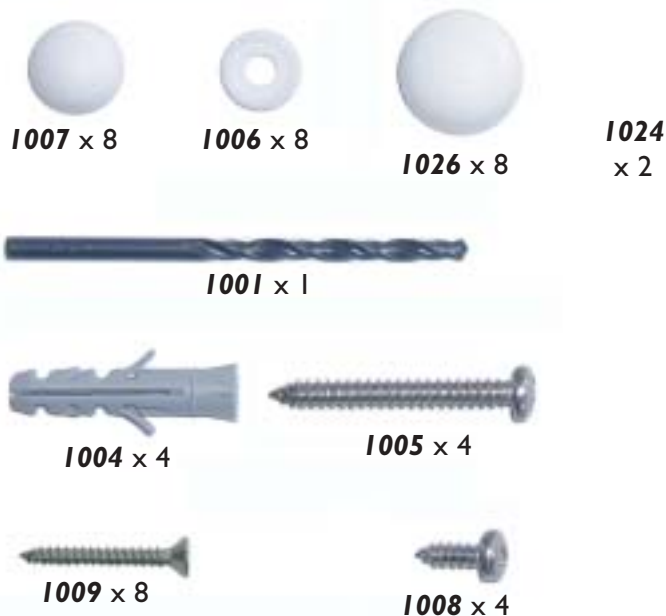
3 Enclosure components



Kit parts shown actual size code letters identified in text

PLEASE QUOTE PART NUMBERS WHEN ORDERING SPARES

4 Installation kit



5 Wall profile 1

- 1 Place a wall profile **A** against the wall, **25mm** in from the edge of the tray. The flange on the profile should be toward the inside of the enclosure.
- 2 Using the vertical element of the spirit level ensure the profile is perpendicular to the tray.
- 3 Mark the hole positions on the wall through the 2 holes in the profile flange.
- 4 Drill the wall to accept the wall plugs **1004**.
- 5 Place the plugs **1004** in the holes.
- 6 Screw the profile to the wall with the long screws **1005** and cover cap retainers **1006**. Check vertical alignment and make any minor adjustment via the slotted holes in the profile flange.

TIP Place paper in the tray to prevent damage to the surface while working on the installation.

Also, temporarily block the waste hole with paper to prevent losing small parts.



6 Wall profile 2

- 1 Place 2nd wall profile **A** against the opposite wall, **25mm** in from the edge of the tray. The flange on the profile should be toward the inside of the enclosure.
- 2 Using the vertical element of the spirit level ensure the profile is perpendicular to the tray.
- 3 Mark the hole positions on the wall through the 2 holes in the profile flange.
- 4 Drill the wall to accept the wall plugs **1004**.
USE EYE PROTECTION
- 5 Place the plugs **1004** in the holes.



3



2

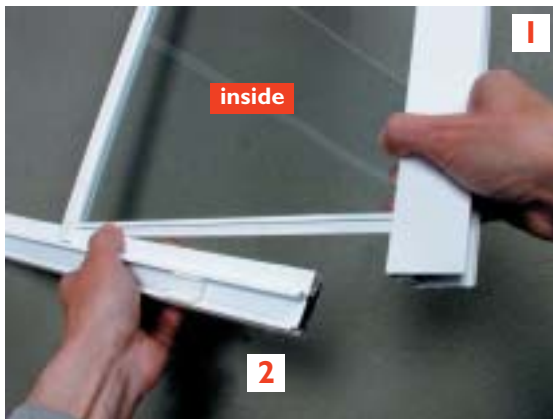


**DO NOT
SCREW THE
PROFILE TO
THE WALL
AT THIS
STAGE**



7 Frame assembly

- 1 Place one of the flat, side panels **B** on the floor, inside up.
- 2 Insert one of the curved rails **D** onto the panel.
- 3 Fix the rail to the panel with 2 of the countersunk screws **1009**.
Fix the 2nd rail to the other end of this panel by the same process.



8 Frame assembly

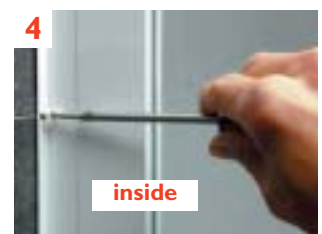
- 1 Stand the assembled side panel and 2 curved rails up, as shown, and slide the 2nd side panel into the slots in the curved rails.
- 2 Fix the panel to the rails with the countersunk screws **1009**, top and bottom.



9 Frame mounting

- 1 Insert the 2nd wall profile **A** into the side panel frame, flange towards the inside of the enclosure.
- 2 Lift the assembly onto the shower tray.
- 3 Slide it onto the wall profile secured to the wall as shown.

- 4 Fix the 2nd wall profile to the holes drilled and plugged previously at stage 6 using 2 of the long screws **1005** and screwcap retainers **1006**.



10 Frame finishing

1 Snap cover caps **1007** onto all 4 wall profile screws.



2 Drill through each of the frame profiles into the wall profiles with the drill bit **1001**.



3 Use the short screws **1008** and screwcap retainers **1006** to fix the frame profiles to the wall profiles.



4 Snap the cover caps **1007** onto all 4 frame screws.



5 Press the wall profile cover caps **1025** onto the wall profiles.



6 Press the frame profile cover caps **1024** onto the frame profiles.



7 Completed assembly viewed from the outside.

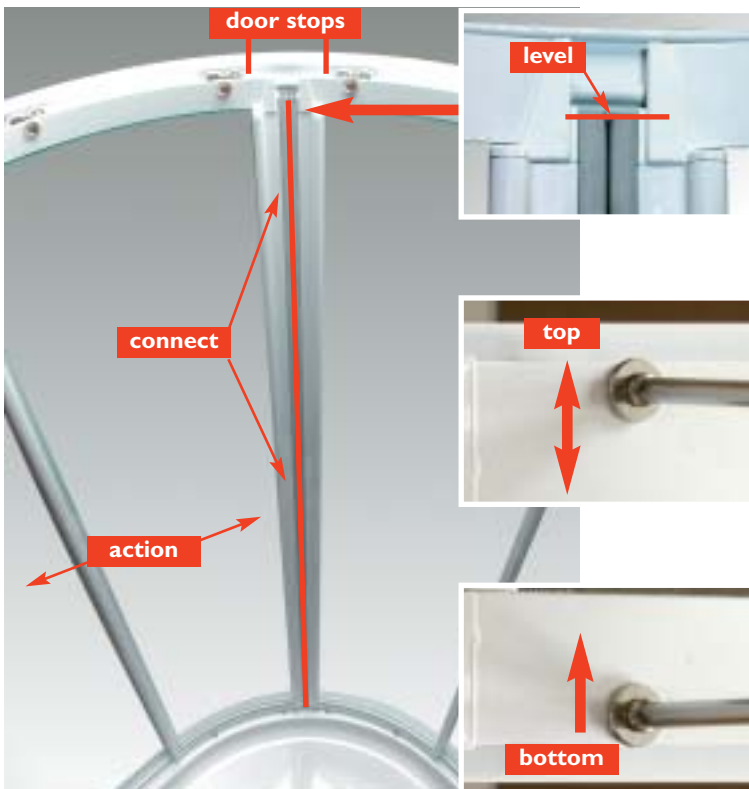


11 Door assembly

- 1 Select one of the curved door panels **C** and slacken all 4 wheel retainer screws to allow them free movement in the adjuster slots. Standing inside the enclosure, hang the door onto the top rail.

TIP The magnetic door closer must be toward the centre of the opening and the 'wiper' seal should be inside the profile of the flat side panel.

- 2 Lightly tighten the retainer screws.
 - 3 Locate the bottom wheels into the bottom rail and lightly tighten the retainer screws.
- Repeat process for 2nd door.



12 Door adjustment

Working from inside the enclosure, slide the two door panels to meet in the centre. Check the magnetic seals **connect** all the way from top to bottom and that their top ends are **level**. Adjust and tighten the **top** screws.

Adjust the **bottom** wheels up to locate with the rail. Check for a smooth running **action** and re-adjust if necessary. Tighten the screws.

Apply the cover caps **1026**.



13 Seal enclosure

Use a quality silicon sealant and applicator gun to seal the finished enclosure.

- 1 Top to bottom on the **INSIDE** between the wallprofile flanges and the wall.



- 2 All the way around the bottom rail on the **OUTSIDE** between it and the tray and approx. 50mm (2") up between the wall profiles and the wall.



- 3 Between the bottom rail and the upright frame profiles, both sides.

NOTE: DO NOT SEAL BOTTOM RAIL ON INSIDE

IMPORTANT
DO NOT SEAL THE BOTTOM RAIL ON THE INSIDE OF THE ENCLOSURE



24 HRS



SERIES



SHOWER ENCLOSURES

SERIES 5 QUADRANT

WE ARE SURE YOU WILL BE PLEASED WITH YOUR NEW MERLYN SHOWER ENCLOSURE. IF YOU HAVE ANY TECHNICAL ENQUIRIES PLEASE CALL OUR SERVICE DEPARTMENT AT 00 353 56 7724770
Where a shower enclosure has been installed contrary to these instructions, Merlyn cannot accept responsibility for any loss or damage, however caused, and any on-site service may incur a charge.

www.merlynbathrooms.com